

**ITEM 25. PARKING – PERMIT PARKING – GEORGE AND VICTORIA
STREETS ERSKINEVILLE**

TRIM RECORD NO: 2014/305651

RECOMMENDATION

It is recommended that the Committee endorse the allocation of parking as follows:

- (A) On the eastern side of George Street, Erskineville, between the points 0 metres and 10 metres (two car spaces) as “No Stopping” and between the points 10 metres and 56.6 metres (eight car space) as “2P 8am-6pm Mon-Fri Permit Holders Excepted Area 36” south of Victoria Street.

- (C) On the southern side of Victoria Street, Erskineville, between the points 0 metres and 10 metres (two car spaces) as “No Stopping” and between the points 10 metres and 43.2 metres (six car space) as “2P 8am-6pm Mon-Fri Permit Holders Excepted Area 36” east of George Street.

DECISION

BACKGROUND

In July 2014, the City received a petition signed by residents of nine properties requesting consideration for 2P permit parking in George and Victoria Streets, Erskineville.

COMMENTS

Parking on the eastern side of George Street, between Victoria and Macdonald Streets, and the southern side of Victoria Street, between George and Bridge Streets, is currently unrestricted.

On-site inspection shows there is a need to provide timed permit parking to increase parking turnover and improve resident access to on-street parking.

The proposed changes would limit any vehicle which does not have a permit to two (2) hours of parking from 8am to 6pm, Monday to Friday where the signs are installed.

Residents with an Area 36 parking permit will be exempt from the 2-hour time limit.

A two-hour parking limit is preferred for streets in the inner residential areas as it better balances the long-stay parking needs of permit holders with the needs of all households to use parking for visitors, family, carers and tradespeople.

The proposed “2P 8am-6pm Mon-Fri Permit Holders Excepted Area 36” restriction is consistent with the existing parking controls in the area.

CONSULTATION

The City consulted local residents and businesses in the area. There were 72 letters sent out with seven responses supporting the proposal and three responses opposing the proposal.

The submissions opposing the proposal were concerned about the loss of unrestricted parking. The submissions supporting the proposal believed the parking change would improve resident access to on-street parking.

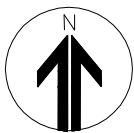
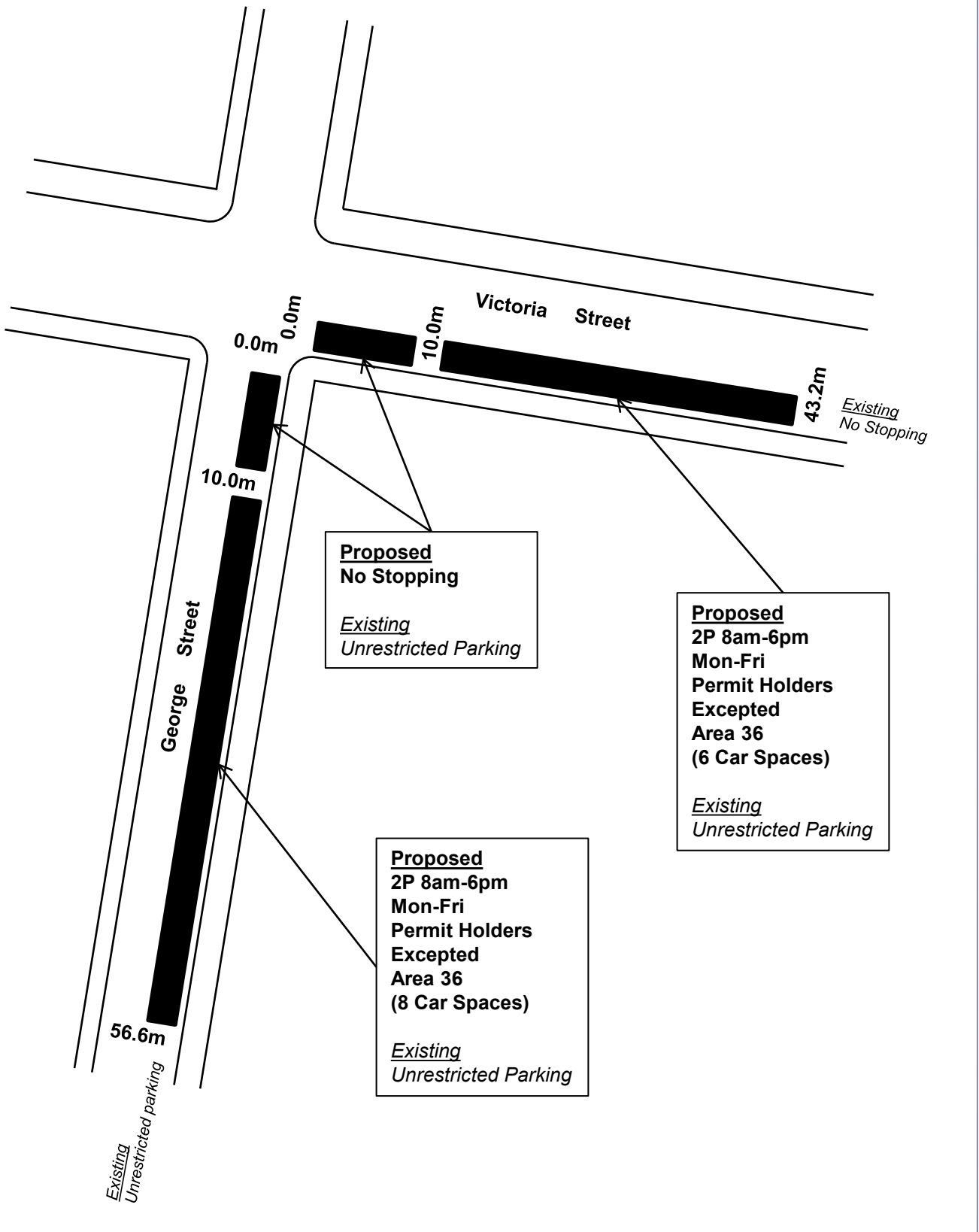
FINANCIAL

Funds are available in the current budget.

ATTACHMENTS

Parking – Permit Parking – George and Victoria Streets Erskineville

Michael Rimac, Engineering Traffic Officer



PROPOSAL

GEORGE AND VICTORIA STREETS, ERSKINEVILLE
PERMIT PARKING



